

2025-26 Policy Roadmap

ROADMAP SUMMARY

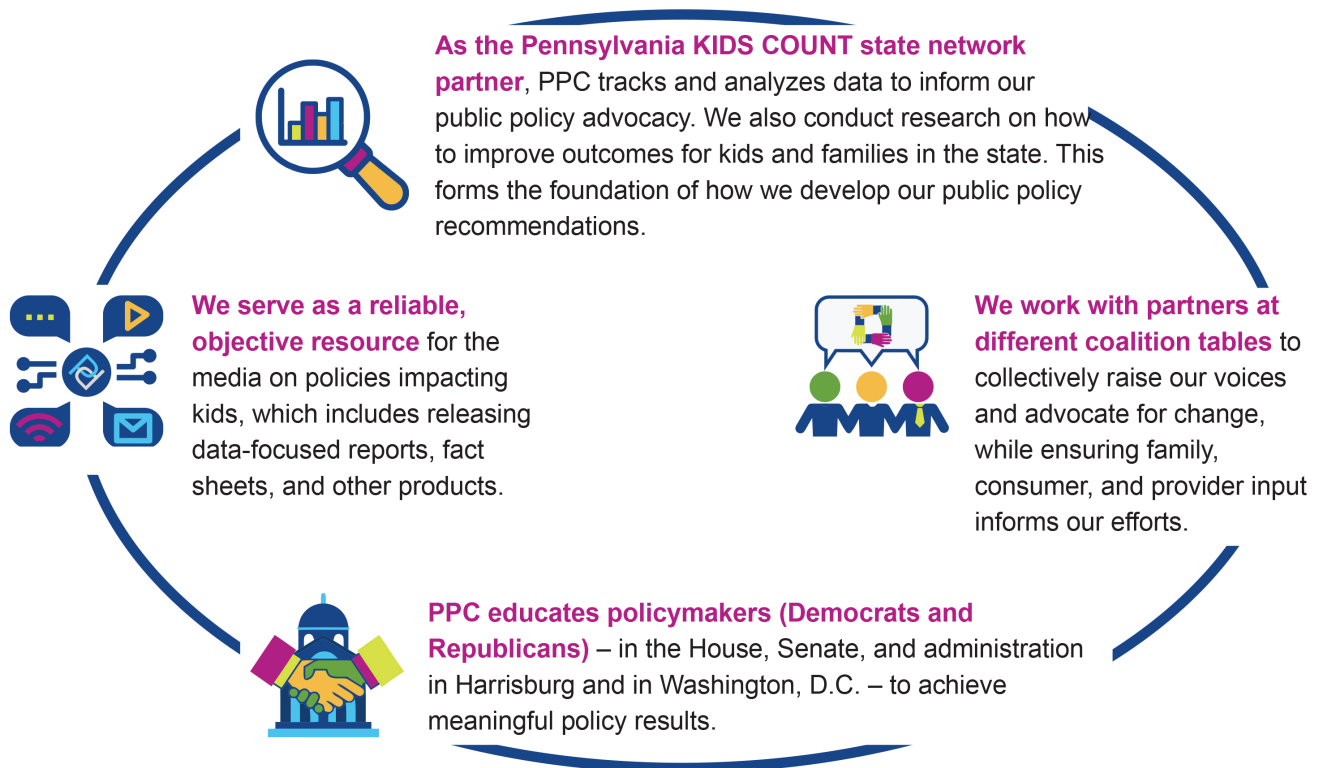
Pennsylvania Partnerships for Children is pleased to present our biennial policy roadmap that aligns with our organizational mission to improve the health, education, and well-being of children and youth in the commonwealth.

Ensuring each child living in Pennsylvania can reach their full potential means that PPC is committed to policy choices that improve maternal

and child well-being, advance racial equity and support families disproportionately impacted by poverty.

Our work to advance equitable policy solutions and prioritize the well-being of Pennsylvania children and families remains as important as ever, because we can't achieve our goals if any child is left behind.

HOW WE WORK



2025-26 POLICY ROADMAP



CHILD WELFARE

Ensure each child in Pennsylvania has the opportunity to grow up in a home where they are safe and protected from abuse and neglect.

1. Strengthen the response to child abuse and neglect by building a strong and robust community prevention model.
2. Improve policies that increase the identification and utilization of kin resources.
3. Reduce the use of group care unless it is necessary to meet the time-limited treatment needs of youth.
4. Improve outcomes for transition age youth in foster care or exiting to adulthood.
5. Ensure that biological parents, caregivers, children, and youth are receiving adequate mental and behavioral health services to avoid the need for formal child welfare intervention and foster care placement.
6. Monitor policy reform to ensure the child welfare system is adequately supported from both financial and staffing perspectives at the federal, state, and county levels.



EARLY CARE AND EDUCATION

Ensure each child in Pennsylvania has the opportunity to participate in affordable and accessible high-quality early care and education, including infant and toddler child care, as well as pre-kindergarten education.

1. Increase the number of children enrolled in publicly funded, high-quality pre-k.
2. Increase the number of Child Care Works eligible children, specifically infants and toddlers, in high-quality child care programs.
3. Strengthen Infant Early Childhood Mental Health (IECMH) through collaboration with early childhood education, health systems, Early Intervention (EI), and child welfare.
4. Support economic policies that promote family affordability such as a state Earned Income Tax Credit (EITC) to provide working families a path to financial stability.



HOME VISITING

Ensure each child in Pennsylvania has the opportunity to grow up in a stable and healthy home environment.

1. Increase the number of children and families receiving evidence-based home visiting services.
2. Support the home visiting workforce and program sustainability by ensuring adequate levels of staffing correspond with service expansion and by building and retaining a qualified and culturally informed workforce to meet families' needs.
3. Explore more opportunities for crossover and coordination as part of the broader work of services and supports for families with young children since home visiting has an expansive reach (i.e. early intervention, maternal health, nutrition, housing, children's physical and mental health).



K-12 EDUCATION

Ensure each child in Pennsylvania has the opportunity for an adequate and equitable high-quality public education.

1. Ensure adequate state funding for career and technical education (CTE) so that every child who is interested can participate.
2. Support increased investments in basic education, adequacy targets, and special education funding as well as evaluate and recommend strategies to address and advance adequacy and equity.



PERINATAL & CHILD HEALTH

Ensure each parent and child in Pennsylvania has the opportunity for affordable, quality health care access.

1. Increase access to prenatal and postpartum services within Medicaid and CHIP for pregnant adults to ensure expecting mothers, infants, and toddlers start and stay healthy.
2. Build on the success of Medicaid and CHIP to ensure every Pennsylvania child is insured.
3. Promote positive health outcomes for children as a direct result of Medicaid, CHIP and/or the Affordable Care Act.
4. Assure that children enrolled in Medicaid and CHIP have adequate benefit packages to meet their needs, and that they are appropriately receiving well-child visits, immunizations, screenings necessary for their healthy development, as well as access to mental health and dental health services.
5. Promote efforts to identify and prevent lead exposure in children to ensure their healthy development.
6. Advance policies that support children identified with developmental delays and disabilities through early intervention programs, while also providing ongoing support to parents and providers.
7. Increase access to healthy nutrition for women and young children to ensure healthy development.